

MANUAL & MOTORISED LUMAFLO SHADES



BENEFITS

Light Control

- Adjust the light levels in your home seamlessly and take control of your environment with Horiso window shading systems.

Range of Fabrics

- Choose from an extensive selection of fabrics to complement any interior style, from classic to contemporary.

Energy Efficient

- Our uniquely designed shading systems help reduce energy consumption and improve insulation, keeping your home comfortable all year round.

Child Safety

- Child-safety devices provided as a standard on chain systems. For a chain-free solution, we offer motorised options.

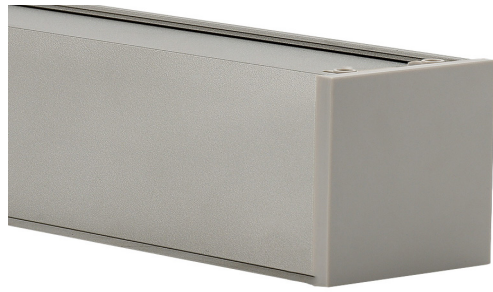
SYSTEM OPTIONS

SYSTEM	MIN WIDTH	MAX WIDTH	MIN DROP	MAX DROP
Chain	300mm	2700mm	600mm	2500mm
Motorised	500mm	2700mm	600mm	2500mm



COMPONENT OPTIONS

HEAD BOXES



Box #66

Colour: Grey
Height: 84mm
Width: 76mm



Curved Box #21

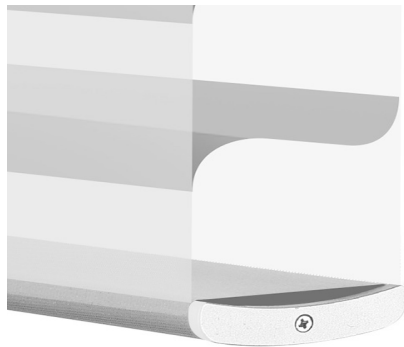
Colour: Titanium
Height: 84mm
Width: 79mm



Large Curved Box #22

Colour: Black
Height: 94mm
Width: 89mm

BASE RAIL



LumaFlo Shade Bar #107

Colour: White
Height: 12.5mm
Width: 52mm



LumaFlo Shade Bar #107

Colour: Grey
Height: 12.5mm
Width: 52mm



LumaFlo Shade Bar #107

Colour: Titanium
Height: 12.5mm
Width: 52mm



LumaFlo Shade Bar #107

Colour: Black
Height: 12.5mm
Width: 52mm

HARDWARE COLOUR OPTIONS



White



Grey



Titanium



Black

