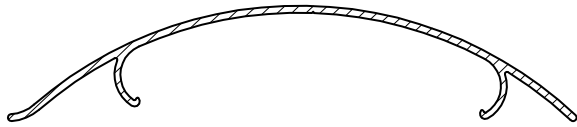
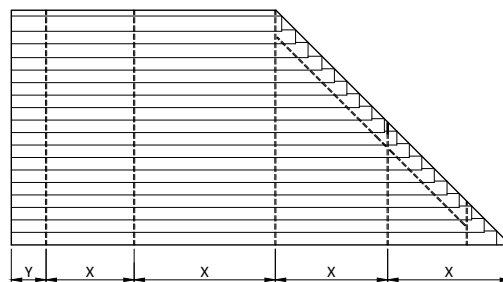
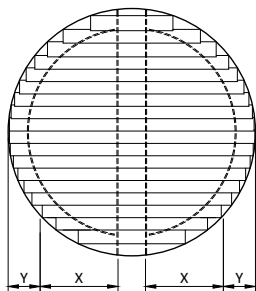
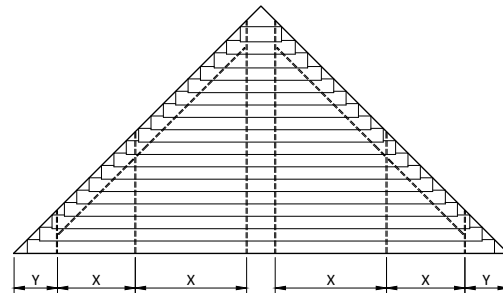
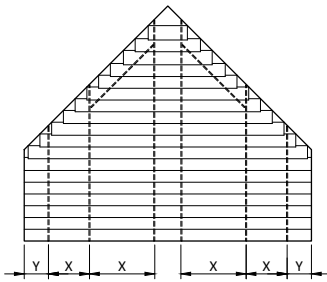
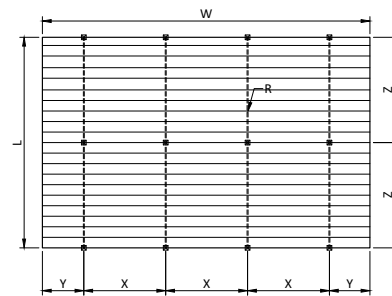



# DATA 145E

145mm Aluminium Louver



145mm Extruded Louvers



		INTERNAL	EXTERNAL
	Width	w	
	Length / Drop / Height	L	
	Rack arm distance	X	
	Slat side overhang	Y	
	Support distance	Z	
	Heavy duty Rack Arm 65mm	max. 250cm	max. 225 cm
	Box Rack Arm 120mm	max. 500cm	max. 400 cm
		Minimum # Rack Arms	Minimum # Rack Arms
	Number of Rack Arms	R	
		-300 cm = 2 pcs	-260 cm = 2 pcs
		301-500 cm = 3 pcs	261-440 cm = 3 pcs
		501-600 cm = 4 pcs	441-600 cm = 4 pcs

Larger systems as max\* can be calculated and designed by Horiso.

