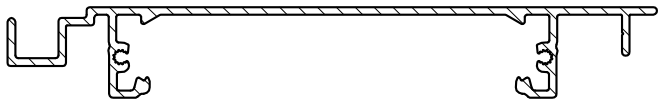
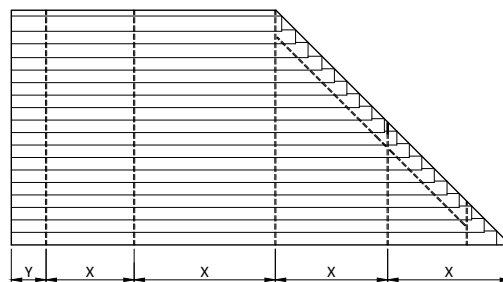
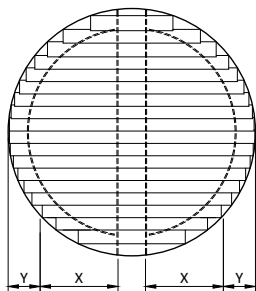
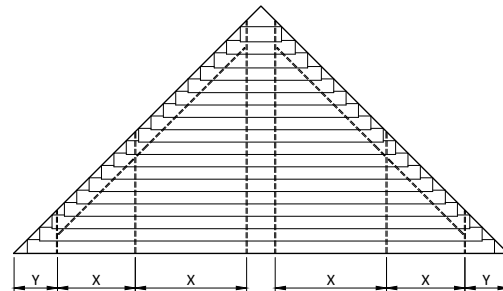
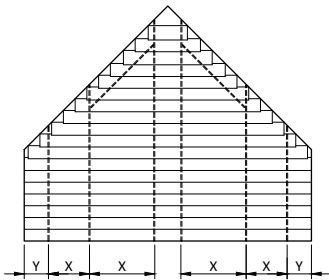
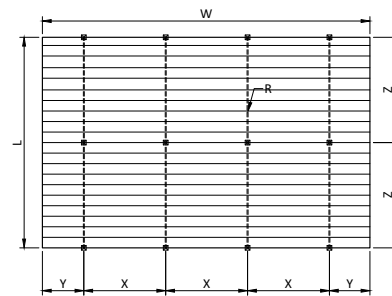



DATA 155E

155mm Aluminium Louver



155mm Extruded Louvers



		INTERNAL	EXTERNAL
Width	w	Max. 18m ²	Max. 16m ²
Length / Drop / Height	L		
Rack arm distance	X	max. 200 cm	max. 180 cm
Slat side overhang	Y	max. 50 cm	max. 40 cm
Support distance	Z		
Heavy duty Rack Arm 65mm		max. 250cm	max. 225 cm
Box Rack Arm 120mm		max. 500cm	max. 400 cm
		Minimum # Rack Arms	Minimum # Rack Arms
Number of Rack Arms	R	300 cm = 2 pcs	260 cm = 2 pcs
		301-500 cm = 3 pcs	261-440 cm = 3 pcs
		501-600 cm = 4 pcs	441-600 cm = 4 pcs

Larger systems as max* can be calculated and designed by Horiso.

